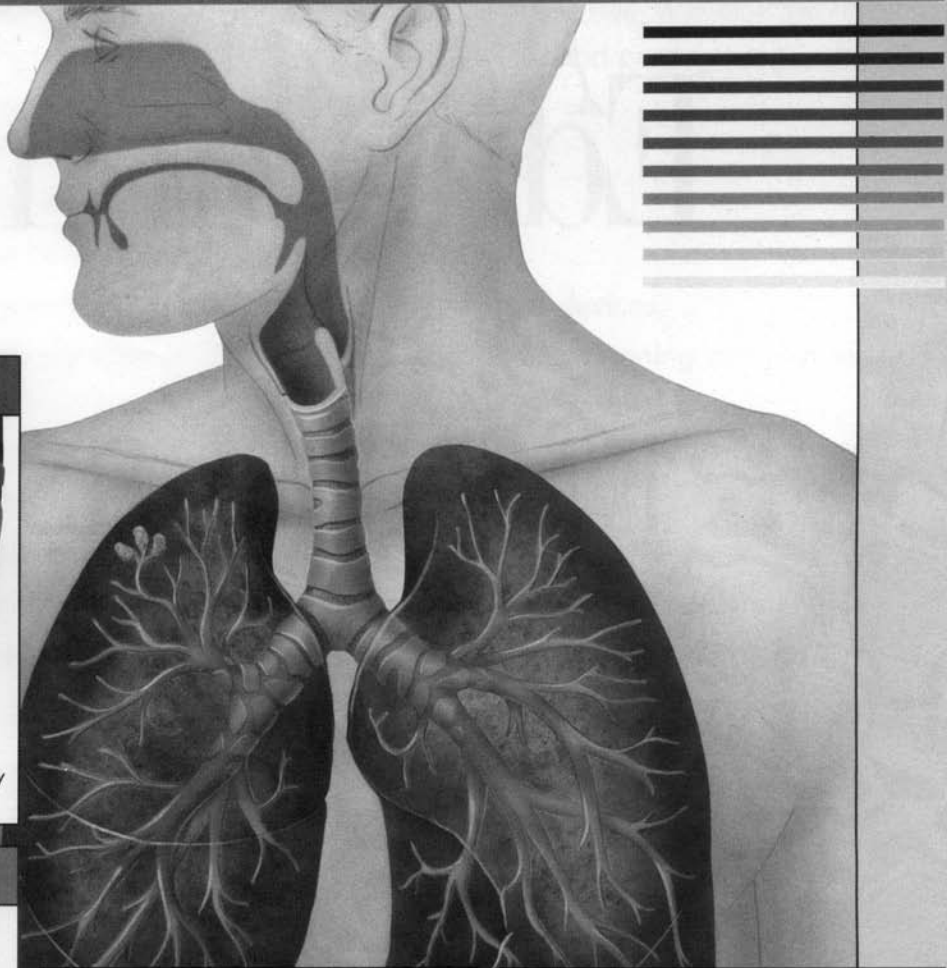
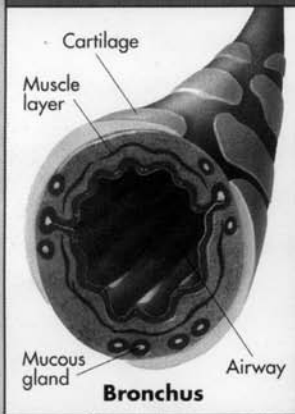


THE REACTIVE AIRWAY
WHAT HAPPENS DURING AN ASTHMA ATTACK

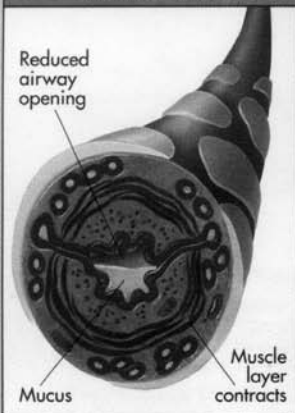
Asthma Explained



Normal

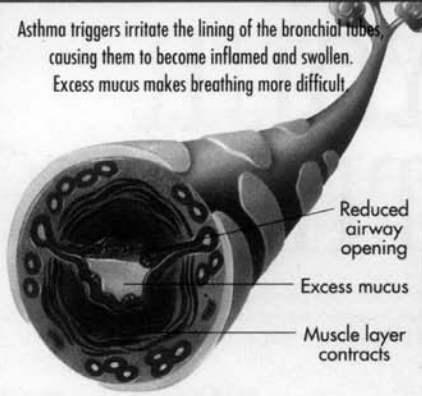


Asthma



Inflammation

Asthma triggers irritate the lining of the bronchial tubes causing them to become inflamed and swollen. Excess mucus makes breathing more difficult.



Bronchoconstriction

During an asthma attack, bands of muscles surrounding the bronchial tubes contract, causing the airway to narrow.

